

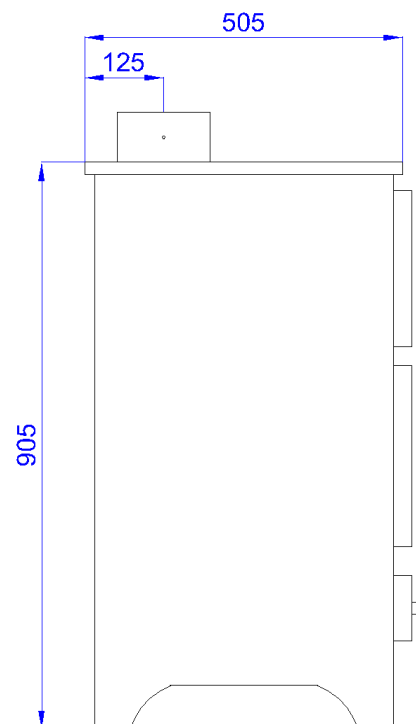
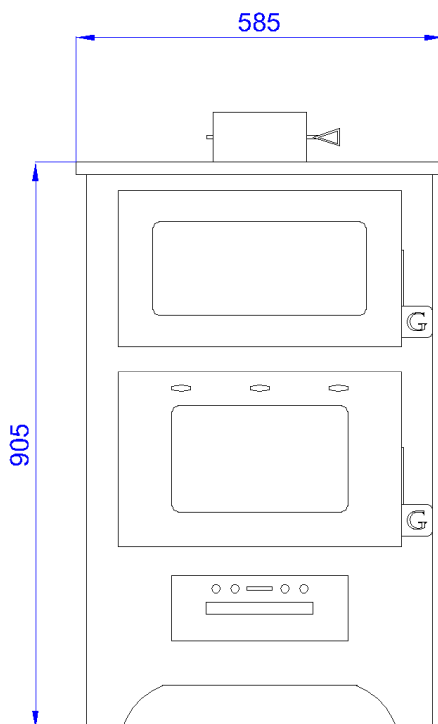
# MG450

The MG450 stove, is a stove made of steel up to 3mm thickness. The combustion chamber lined with firebricks 30mm thickness. It also has ceramic glass for extra safety, and fire robe on the glass and the door for absolute foreclosure. The MG450 stove is ideal for warm an area of 80 sqm - 100 sqm. The stove has an oven, covering the increased needs for cooking. With built-in enamel oven cooking, for excellent traditional cooking. Including oven thermometer. The glass furnace is heat resistant.

Each stove has CE certification. The energy efficiency and the power is certified by TTC.



<b>Energy efficiency</b>	72%
<b>Power</b>	12kw
<b>Exhaust diameter</b>	Φ150mm
<b>Weight</b>	95 kg
<b>Dimensions</b>	585/505/905



# MG450

*The MG450 stove, is available only in one color for the front doors and the ash tray.*



*The main characteristics of the MG450 stove are:*

- ✓ *Built in steel*
- ✓ *Removable oven for a clean and safe cooking*
- ✓ *Double wall construction for convective hot air circulation and oven heating*
- ✓ *Combustion chamber lined with 30mm firebricks thickness and roof for more economy in burning*
- ✓ *Certified combustion values: 72% efficiency and 0,3443% content of CO in the smoke (normalised to 13% O<sub>2</sub>)*
- ✓ *Primary and secondary air controls*
- ✓ *1 grill*
- ✓ *Ash grate and removable ash pan for easy disposal of ashes*
- ✓ *Removable cover for cleaning and maintenance the combustion chamber*

***and of course the certified quality and the proven value for money.***